



FLAMBEAU HILLS TRAILS

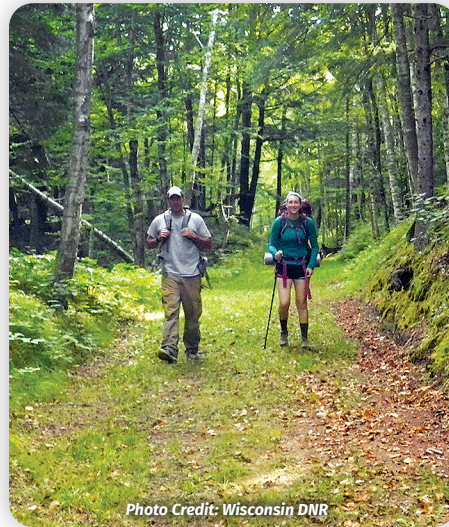
Flambeau Hills (David D. Klug Memorial) Trails offer a variety of ski-touring groomed and tracked trails for skating and traditional skiing, and plenty of winter snow for great conditions. Winding through a mixture of hardwoods and conifers, the trails cross three bridges, providing outstanding glimpses of the Flambeau River. Trails are well-signed and include a three-sided shelter area along Pinery Grade. **Call ahead for conditions.** The five trail loops and trail links total 15 miles and offer a variety of options for novice or advanced skiers. Loops are designated for one-way ski travel.

LAKE OF THE PINES TRAILS

The Lake of the Pines Campground has three trail loops totaling 1.7 miles for hiking or snowshoeing. From the boat landing, the **Lakeside Nature Trail** passes below a majestic canopy of hemlocks with scenic views of Lake of the Pines. The **Nature Trail Loop** offers some hilly terrain and boardwalks crossing shallow seepage springs. Following the **Maple Trail**, you will complete the outer loop back to the campground.

OXBO TRAIL SYSTEM

The newest rejuvenated trail system on the Flambeau River State Forest is ready for use! **The Oxbo Trail System** has roughly eight miles of maintained trails to accommodate multi-use. In the summer enjoy hiking and biking, and in the winter enjoy hiking, snowshoeing and skiing. Appreciate the proximity of the Oxbo Pines State Natural Area and the North Fork of the Flambeau River. The parking lot is located just off of Hwy 70 and is large enough to accommodate multiple vehicles. Trail passes are required for winter use on this trail. The northern end of the Flambeau Hills Trail System is located directly across Highway 70 and you can enjoy it year-round!



LITTLE FALLS AND SLOUGH GUNDY TRAILS

Little Falls and Slough Gundy Trails offer one mile of hiking and outstanding views of the rugged whitewater on the South Fork of the Flambeau River. **Little Falls Trail** follows the river to picturesque falls, and at its northernmost point it provides access to **Slough Gundy Trail**. During low water, the Slough Gundy Trail offers access to the boulder-strewn riverbed crossing to the island trails, with great views of the river. Along the trail look for large white pines, cedars, hemlocks and the unusual rock formation called Elephant Rock (a large boulder with a hemlock that straddles over it, making it look like a very large elephant with a trunk).

IN CASE OF EMERGENCY

Dial 911. In the event of severe weather, please take shelter in your vehicle.



Come back soon! And be sure to visit Wisconsin's other Northern State Forests

- | | |
|---|---|
| 1 Governor Knowles State Forest.....715-463-2898 | 5 Governor Earl Peshtigo River State Forest715-757-3965 |
| 2 Brule River State Forest715-372-5678 | 6 Black River State Forest715-284-4103 |
| 3 Flambeau River State Forest.....715-332-5271 | 7 Coulee Experimental State Forest.....608-785-9007 |
| 4 Northern Highland American Legion State Forest.....715-542-3923 | |

dnr.wi.gov (search "state forest")

DNR Call Center (toll-free 7 a.m.-10 p.m.) **1-888-936-7463** • WARDEN TIP LINE: **1-800-847-9367**

HIKE, BIKE, SKI & SNOWSHOE



Flambeau River State Forest



WELCOME!

Flambeau River State Forest offers many opportunities for hiking, biking, skiing and snowshoeing in the forest. Hiking and biking are allowed on trails during the summer and in winter whenever the trails are not groomed for cross-country skiing. In winter when trails are not groomed for cross-country skiing, visitors may snowshoe or hike. All trails are open during small game and deer hunting seasons. To ensure your safety during these times, wear blaze orange or fluorescent pink. Vehicle admissions stickers are required for parking at the campgrounds. No trail pass is needed for the nature trails.

HIKING AND BIKING

The Flambeau Hills Trails also offer hiking and biking in non-snow seasons. For your safety, stay to the right of the trail when approaching steep hills and blind corners. Damp soil conditions may limit trail mowing, so check with the forest headquarters for trail conditions. Trails are not designed for high-speed travel. They can become soft when wet, and may erode. Use caution in areas of loose dirt, wet leaves and other loose material.



SNOWSHOEING

Snowshoeing is allowed anywhere in the forest, on or off-trail, except for designated cross-country ski trails.

ADDITIONAL INFORMATION AND TRAIL CONDITIONS

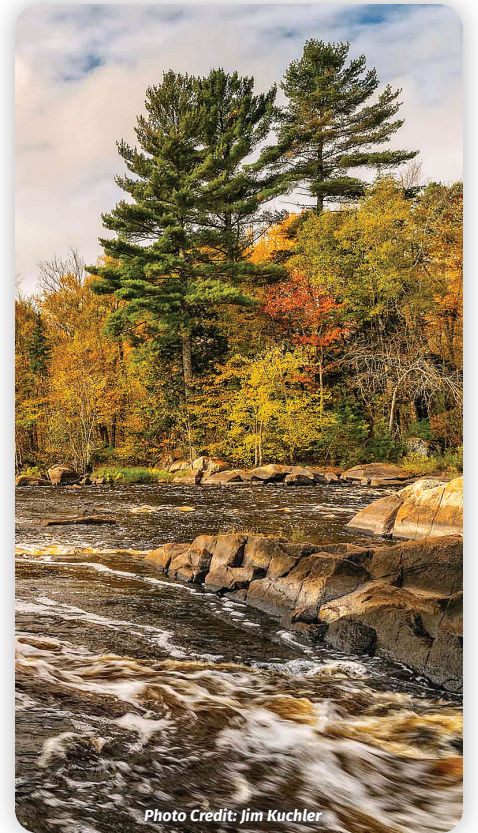
For additional information and trail conditions, contact the forest headquarters located at:
W1613 County W, Winter, WI 54896
715-332-5271

Skiing, biking, and hiking are not recommended during the deer gun hunting season. If you use the trails during this time, wear blaze orange or fluorescent pink.

Trail maps inside!

LOCAL EMERGENCY CONTACT INFORMATION

Price County Sheriff: 715-339-3011 • Sawyer County Sheriff: 715-634-4858
Dial 911



TRAIL RULES

- A **state trail pass** is required for designated ski trails.
- **No dogs allowed** on groomed ski trails.
- **No walking or snowshoeing** on groomed ski trails.
- For your safety and others using the trails, **obey one-way signs.**
- Trails are closed to motorized vehicles year-round.



