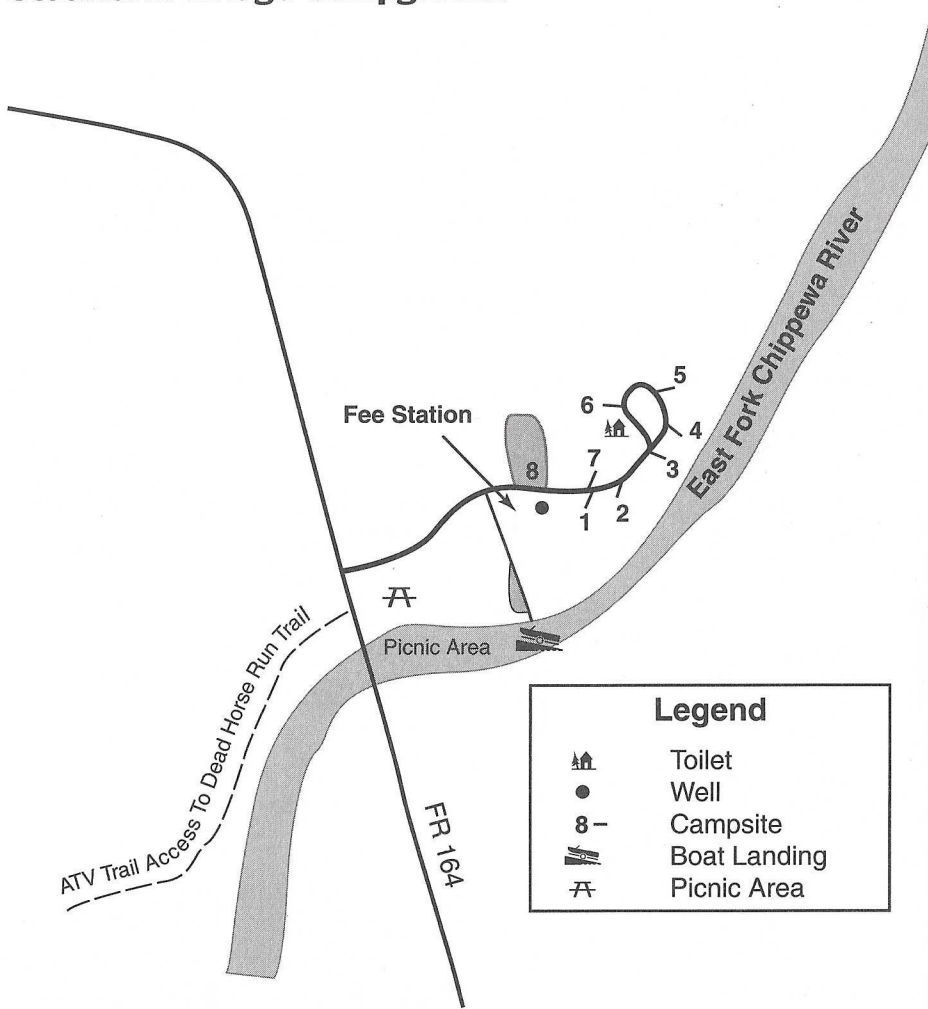


Stockfarm Bridge Campground



Attractions

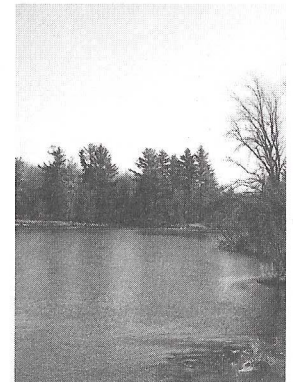
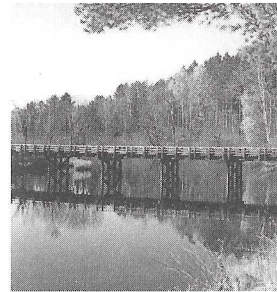
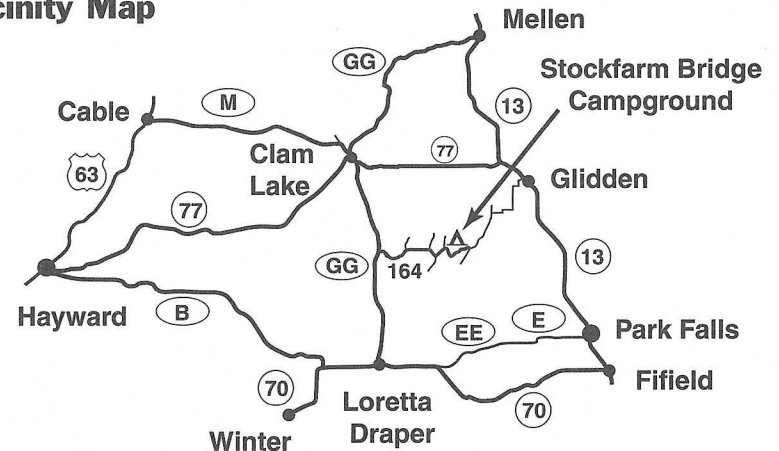
- Stockfarm Campground is located in a red pine forest on the East Fork of the Chippewa River, a Candidate Wild and Scenic River
- The East Fork of the Chippewa River has class I and II rapids and is a good stream to canoe in medium to high water
- A short spur trail links Stockfarm CG to the Dead Horse Run ATV Trail
- Good fishing

Great Divide Ranger District

Directions to Stockfarm Campground

- From Loretta drive north on County Highway GG 10.8 miles to the intersection with FR 164. Turn right (east) and drive 7.8 miles to the campground.
- From the intersection of Highways 77 and 13 drive west 13.3 miles on Highway 77 to County Highway GG. Turn Left (south) on GG and drive 9 miles to the intersection with FR 164. Turn left (east) on FR 164 and drive 7.8 miles to the campground.

Vicinity Map



Size of Campsites

Type Site *	Site Numbers
• Back In 25	1, 3, 4, 5, 7
• Back In 30	2
• Back In 40	6
• Back In 45+	8

* (Back In or Pull Through and maximum length of camper or RV)

Great Divide Ranger District