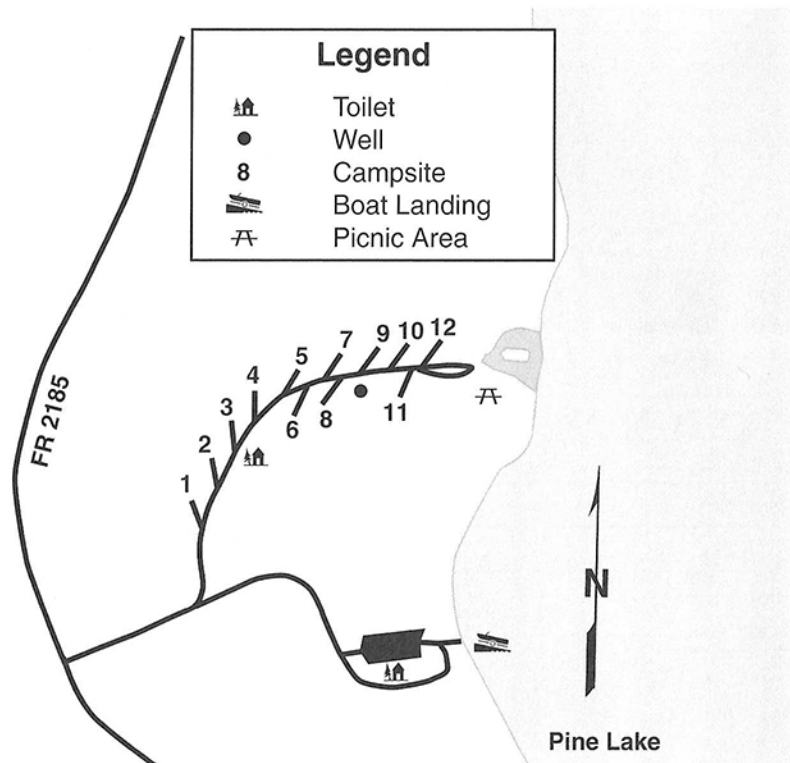


Pine Lake Campground

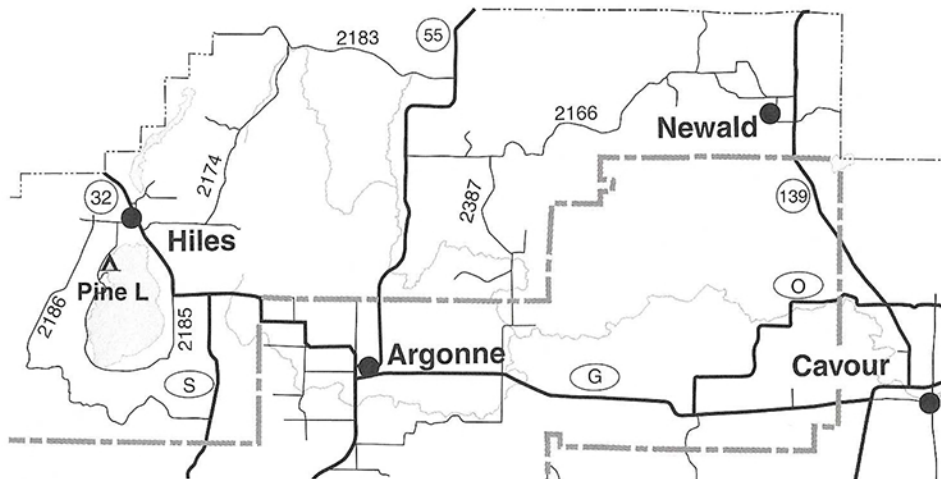
This campground is located along the west shore of the 1,670 acre Pine Lake. If you are looking for northern pike, bass, walleye, or panfish, this is the place. Twelve wooded campsites, a sandy beach and a nice picnic area complete the setting. The campground has a paved access road and the only public boat landing with ample parking.



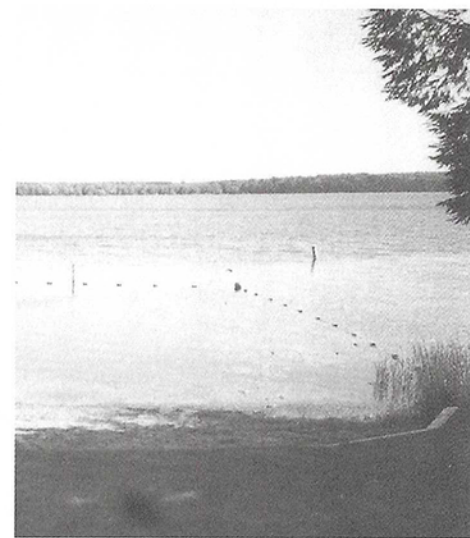
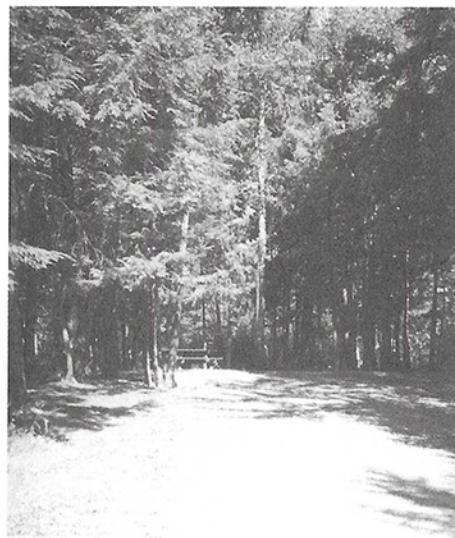
Lakewood-Laona Ranger District

Directions to Pine Lake Campground

- From the intersection of Highway 32 and FR 2186 just south of Hiles, drive west on FR 2186 for 0.5 mile to FR 2185. Turn left onto FR 2185 and drive 1.3 miles to the campground entrance.



Site Type (max RV/trailer length)	Site Numbers
Back in 40'	2, 7
Back in 45'+	1, 3-6, 8-12



Lakewood-Laona Ranger District