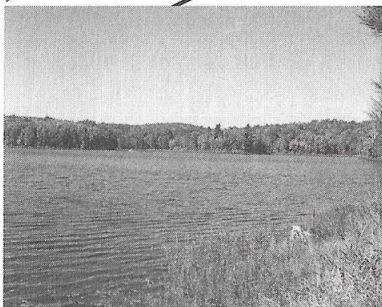
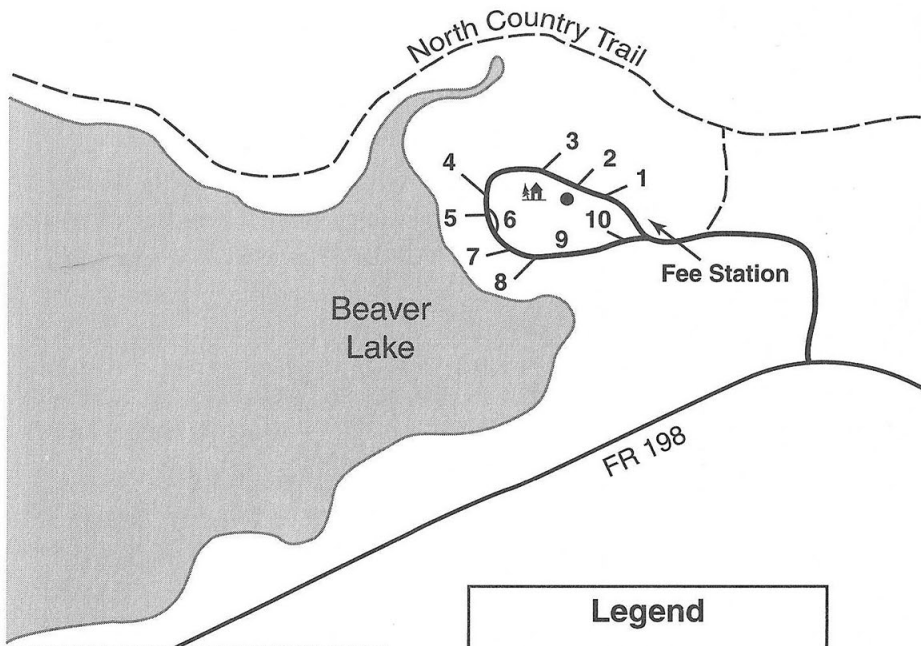


## Beaver Lake Campground



Legend	
	Toilet
	Well
	Campsite
	Boat Landing
	Picnic Area

### Attractions

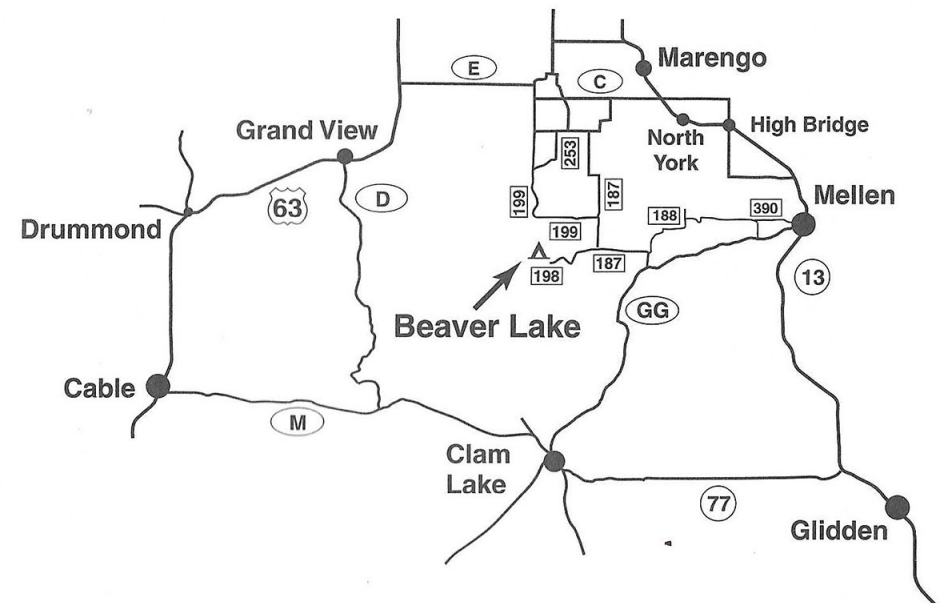
- The campground is located in a maple, birch and red pine forest on 35-acre Beaver Lake
- Beaver Lake has panfish, trout, and channel catfish
- A short spur trail links Beaver Lake CG to the North Country Trail
- A boat landing is located 0.5 mile west of the campground on FR 198
- Near St. Peter's Dome and Morgan Falls
- A short hike or drive from the Marengo Semi-primitive Non-motorized area

Great Divide Ranger District

## Directions to Beaver Lake Campground

- From Mellen drive west on County Highway GG 8 miles to FR 187 (Mineral Lake Rd). Turn right (north) on FR 187 and follow it 3 miles to the T intersection with FR 198 (Pine Stump Corner). Continue straight (west) on FR 198 for 1.7 miles and turn right at the campground sign.
- From Hayward drive east on Highway 77 thirty three miles to Clam Lake. Turn left (northwest) on County Highways GG & M and in 0.1 mile turn right (north) on GG and drive 11.3 miles to FR 187 (Mineral Lake Rd). Turn left (north) on FR 187 and follow it 3 miles to the T intersection with FR 198 (Pine Stump Corner). Continue straight (west) on FR 198 for 1.7 miles and turn right at the campground sign.

### Vicinity Map



### Size of Campsites

Type Site *	Site Numbers
Tent Only	1, 2, 5, 9, 10
Back In 25 ft.	3, 4, 7
Pull Thru 25 ft.	6
Back In 30 ft.	8

\* (Back In or Pull Through and maximum length in feet of camper or RV)



Great Divide Ranger District