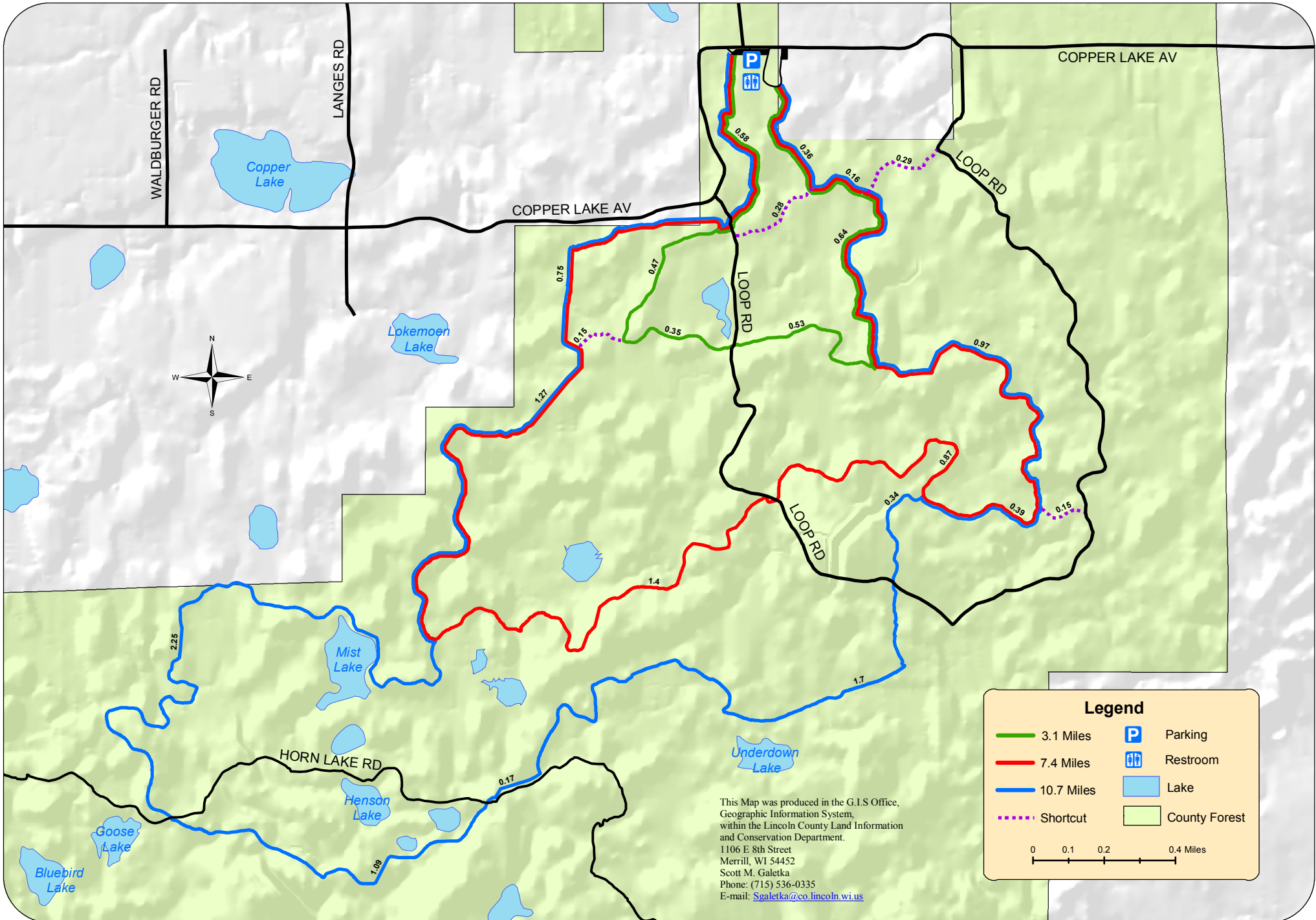




UNDERDOWN SKI TRAILS



This Map was produced in the G.I.S Office,
 Geographic Information System,
 within the Lincoln County Land Information
 and Conservation Department.
 1106 E 8th Street
 Merrill, WI 54452
 Scott M. Galetka
 Phone: (715) 536-0335
 E-mail: Sgaletka@co.lincoln.wi.us

Legend

	3.1 Miles		Parking
	7.4 Miles		Restroom
	10.7 Miles		Lake
	Shortcut		County Forest

0 0.1 0.2 0.4 Miles