

# AFTERHOURS TRAIL SYSTEM



# BRULE RIVER STATE FOREST

THE AFTERHOURS SKI TRAIL SYSTEM CONSISTS OF 27KM OF WELL-MAINTAINED TRAILS FOR BOTH CLASSICAL AND SKATE SKIING.

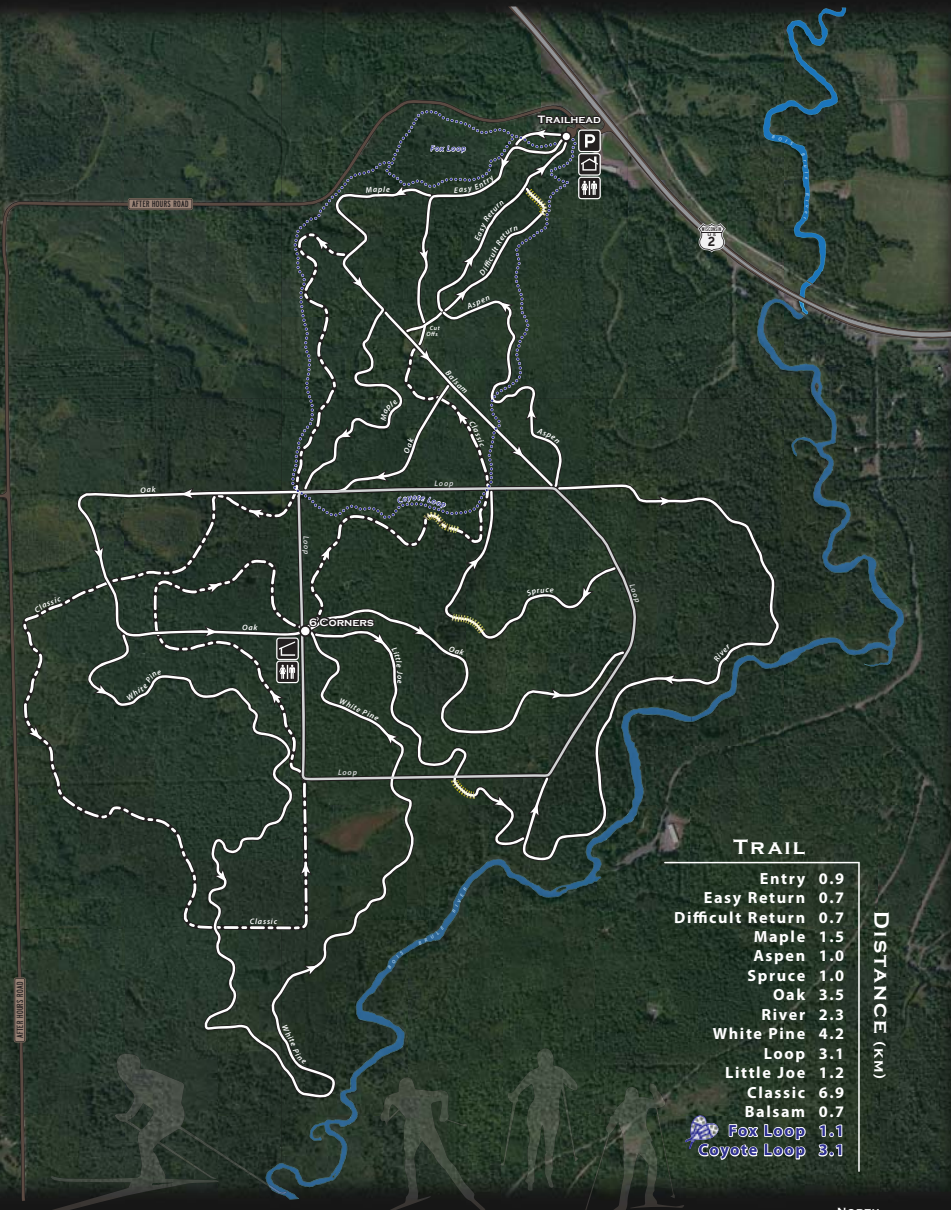
THE TRAILHEAD PARKING, HEATED SHELTER, AND RESTROOMS ARE AVAILABLE COMPLIMENTS OF THE BRULE RIVER STATE FOREST AND THE BRULE VALLEY SKI CLUB.

TRAIL CONDITIONS CAN BE FOUND AT [WWW.SKINNYSKI.COM](http://WWW.SKINNYSKI.COM)

## SKI ETIQUETTE AND RULES

- Purchase a trail pass prior to skiing and snowshoeing.
- Snowmobiles, ATV's, and dogs are prohibited on the trails.
- If you fall, please fill in your Sitzmark.
- Do not walk or snowshoe on the ski trails.
- Skiers should ski within their own abilities.
- Always leave space between skiers and alert others when passing.

*Every effort is made to groom trails in a timely manner. Recently groomed trails can quickly be impacted by heavy trail use and varying weather conditions.*



TRAIL	DISTANCE (KM)
Entry	0.9
Easy Return	0.7
Difficult Return	0.7
Maple	1.5
Aspen	1.0
Spruce	1.0
Oak	3.5
River	2.3
White Pine	4.2
Loop	3.1
Little Joe	1.2
Classic	6.9
Balsam	0.7
Fox Loop	1.1
Coyote Loop	3.1

**State Trail Admission Fees**  
(Required for all skiers 16 years old or older)

Annual Pass ... \$20.00  
Daily Pass ... \$4.00

Self-registration available at the trailhead.

*Trail fees contribute to the cost of grooming and maintenance.*

**Property Information**

Brule River State Forest  
6250 South Ranger Road  
Brule, WI 54820  
(715)372-5678  
[www.dnr.wi.gov/forestry/stateforests/sf-brule](http://www.dnr.wi.gov/forestry/stateforests/sf-brule)

Please consider joining the Brule Valley Ski Club  
[Learn more at www.BRULEXCSKI.com](http://www.BRULEXCSKI.com)

**\*\*If you would like to make a donation to help support the ski trails, contact the Brule Valley Ski Club\*\***

**In an emergency, call the Douglas County Sheriff's Department 9-1-1**  
You are at the Afterhours Ski Trails, provide as much location information as you can

## LEGEND

- Skate/Classic Trail
- Classic Trail
- Snowshoe Trail
- Steep Trail Section
- Trailhead Parking
- Trailhead Warming House
- Shelter
- Restrooms

