

Namekagon Lake



CHEQUAMEGON-NICOLET NATIONAL FOREST

GREAT DIVIDE RANGER DISTRICT

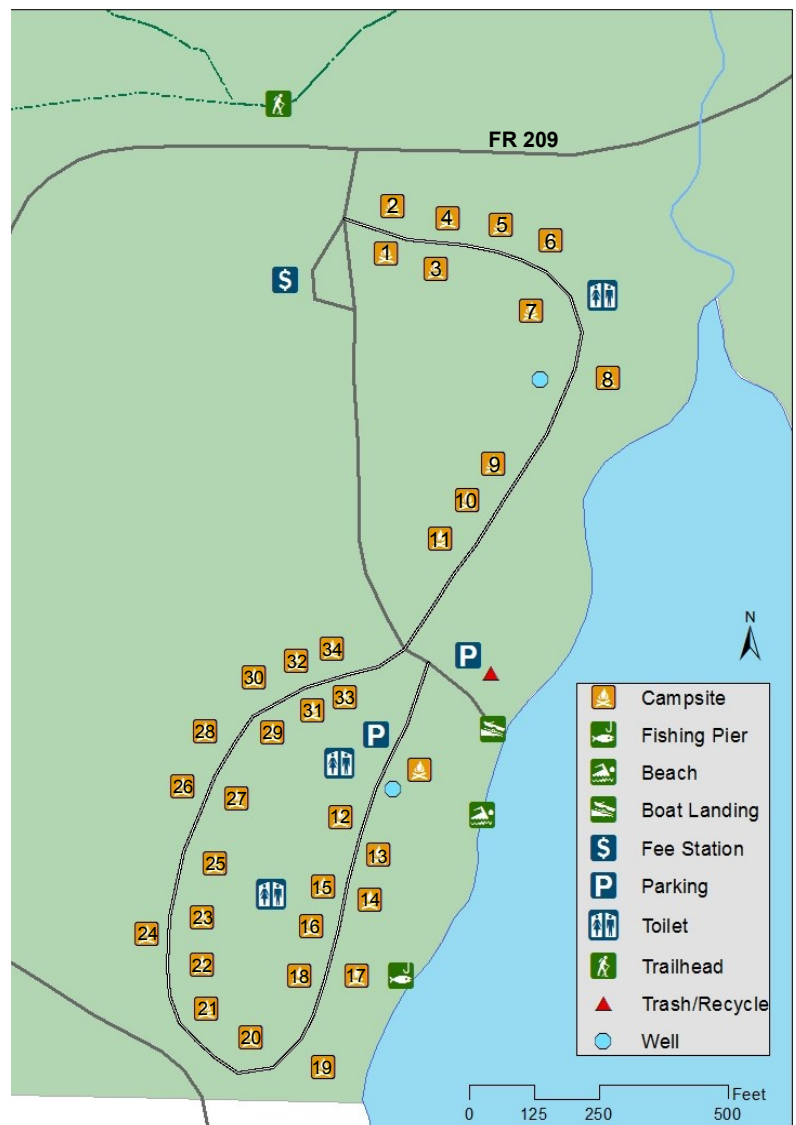
Namekagon Campground is a family-friendly campground that runs alongside its namesake lake at the headwaters of the Namekagon River. It is surrounded by a hardwood and hemlock forest. All campsites provide hardened parking area, picnic table, and fire ring. Recycling and trash dumpsters are provided. There is a day-use area with a picnic shelter, several picnic tables with pedestal grills, a basketball court, a sandy swimming beach, a boat landing, and a fishing pier. Potable water is available from an electric well. Vault toilets are provided throughout campground and day-use area.

Namekagon Campground is an ideal location for a base camp with its close proximity to a number of hiking and biking trails. Famous for its great fishery, this 3,227-acre lake offers excellent fishing for musky, pike, walleye, bass, and other fish varieties. It is the perfect spot to kayak, canoe, jet ski, swim or take a boat ride to one of the many restaurants along the shoreline. Wildlife watching opportunities are abundant as elk, eagles, loons and other wildlife are often spotted in the area. The Namekagon Trail, located just across the road from the campground entrance, provides interpretation about the hemlock forest, the local water resources, and forest creatures that visitors may encounter along their journey.

Features:

- Picnic Shelter available for larger gatherings.
- Boat ramp is located onsite (**Day-use fee payment required if not camping**)
- Near Rock Lake National Recreation Trail and the CAMBA Mountain Bike Trails, as well as the North Country Trail and Porcupine Lake Wilderness Area.

Max RV/ Trailer Length	Site Number
Back in 25'	15, 21
Back in 35'	11, 12, 16, 18, 20, 23, 25, 31
Back in 40'	19, 22
Back in 45'	1 thru 10, 13, 14, 17, 24, 26 thru 30, 32, 33, 34



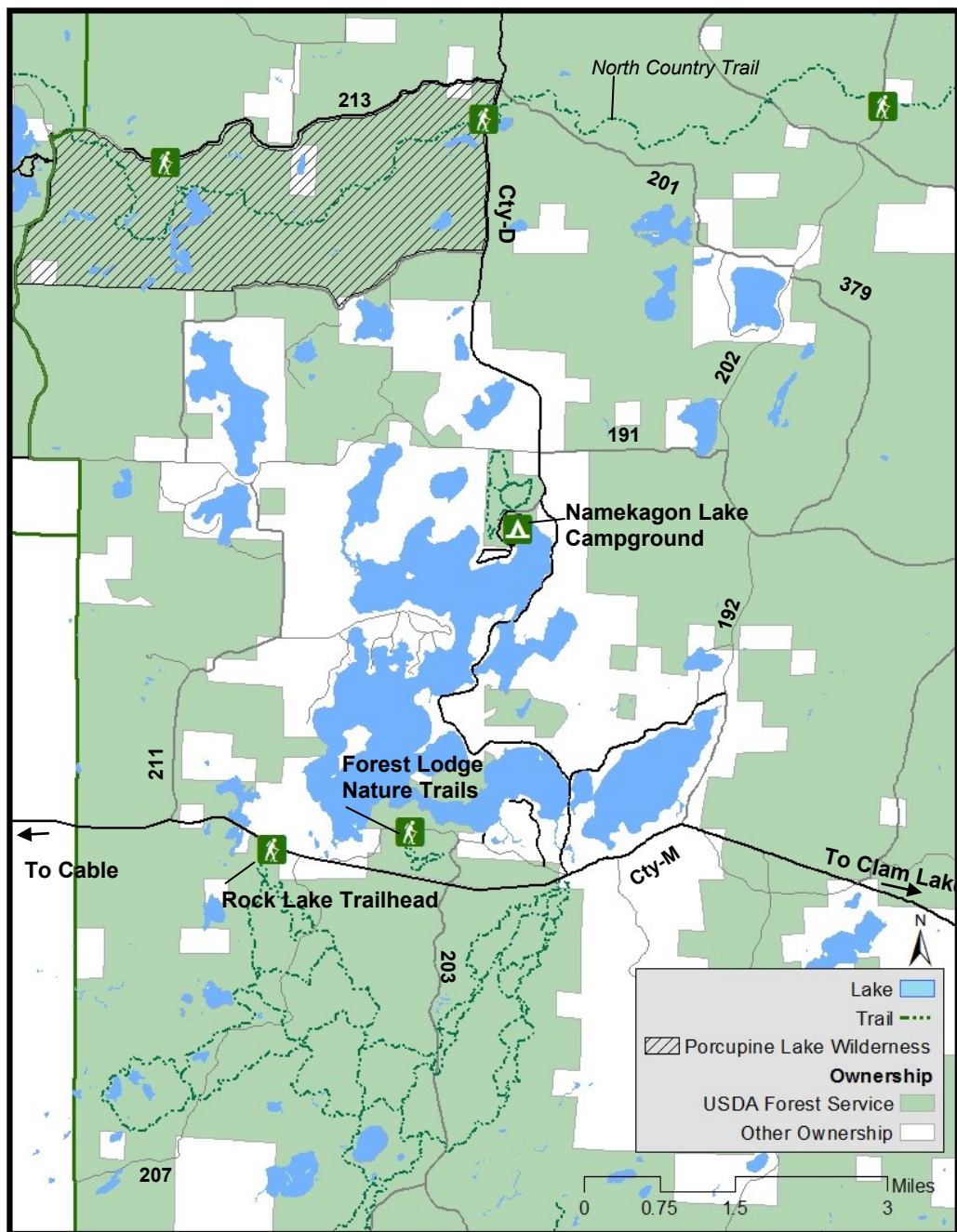
Chequamegon-Nicolet National Forest - Namekagon Lake

Campground and Fee Information

- Individual campsites are \$14 per night or \$7 per night if you are an Interagency, Senior, or Access Pass holder.
- A \$5 per vehicle day-use fee is required for the boat landing, picnic shelter and area, and swimming area.
- Open from May 1st through November 30th, weather permitting. Reservations are accepted from Memorial Day weekend through Labor Day weekend.

Location:

From County Highway M, turn onto County Highway D (across from the Namakagon Town Hall). Drive 5.5 miles to FR 209, turn left (west) at the campground sign and drive 0.3 miles to the campground entrance.



Reservations

Toll Free 877-444-6777

TDD 877-833-6777

Intl: 518-885-3639

Internet: www.recreation.gov



Great Divide Ranger District

P.O. Box 126

Glidden, WI 54527

715-264-2511

Need more information?

on the web at:

www.fs.fed.us/cnfnf

Great Divide Ranger District

PO Box 896

Hayward, WI 54843

715-634-4821



USDA is an equal opportunity provider and employer

